

3-PHASE MOTOR

CS514PE

Product Description

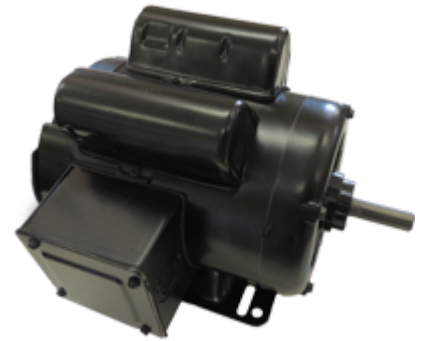
Stud mount motors with or without yoke and base mount motors replacements are available.

Features

Amperages and RPM's are manufacturer's ratings.

Readings may vary depending on application.

For help with selecting the right motor for the right product please contact the Customer Care Center at 1.800.779.3267.



Specifications

| | |
|--------------------------------|--------------|
| Brand | Schaefer |
| Enclosure | TENV |
| Frame Size | 56H |
| Phase | 3 |
| Shaft Diameter (inches) | 5/8 |
| Speeds | 1 |
| Vfd Compatible | Yes |
| Cord | Not included |

| | |
|--|-------------|
| Frequency (hz) | 60/50 |
| Insulation Class | F4 |
| Nameplate Amps | 4.6-4.8/2.4 |
| Power (hp) | 2/1.49 |
| Product Dimensions (L X W X H Inches) | TBD |
| Product Net Weight (lbs) | 44.25 |
| Shaft Length (inches) | TBD |
| Voltage | 208-230/460 |

| | |
|-----------------------------------|-----------|
| Motor Mounting | Base |
| Service Factor 60 Hz Motor | 1.25 |
| Manufacturer | Leeson |
| Oscillating | No |
| Product Certifications | UL/CSA/CE |
| Rpm 50 Hz Motor | 1350-1500 |
| Thermal Protection | Yes |
| Country Of Origin | US |